



ROMY 010

Upholstery fabric with stripe design, woven from a chenille yarn with a long pile, a bouclé yarn and a melangé yarn

Collection:	Bob
Material:	53 % PAN 26 % PES 13 % CO 7 % LI 1 % CV

Color variations:	7
-------------------	---

Total width:	139.00 cm
--------------	-----------

Rapport height:	25,7 cm
-----------------	---------

Usage:



Care instructions:



Available colours:



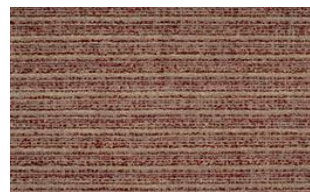
Romy 037



Romy 038



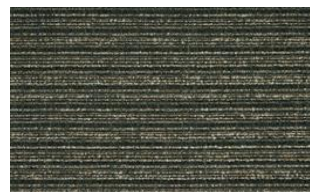
Romy 039



Romy 059



Romy 069



Romy 079

Special notes:

horizontal stripe

Oekotex 100 certified

Shiny Patches in pile fabrics are merely optical and not a reason for complaint.

The illustrations are not color-coded.