



REBEL 040

An authentic and elegant aniline leather, hardly treated, with a natural and open grain structure, soft, warm and full to the touch. | Thickness: 1,2 - 1,4 mm | hide size: 5,00 m²

Collection: Leather

Material: Leder | Leather

Color variations: 8

Usage:

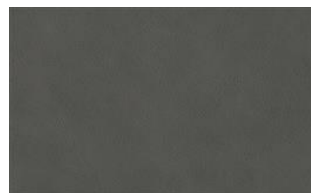


Mark:

Flame retardant

Fire protection:
CAL TB 117-2013
EN 1021 1 & 2

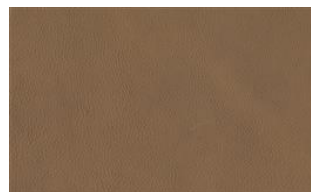
Available colours:



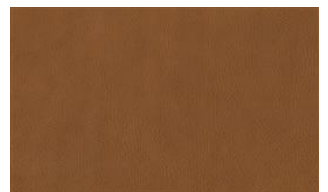
Rebel 041



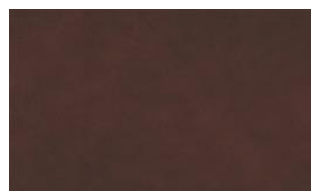
Rebel 042



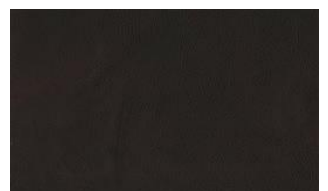
Rebel 043



Rebel 044



Rebel 045



Rebel 070

Special notes:

Piece dyed - check for colour match before processing
recyclable

Clean with a damp cloth or recommended care product.

Hump hole and burn mark might be visible

minimum order quantity 1 hide

The illustrations are not color-coded.

fine



Rebel 071