



## PATINA 071

An authentic Aniline leather with a vintage look, hardly treated, with a natural, open grain structure, soft, warm and full to the touch. | Thickness: 1,3 - 1,5 mm | hide size: 3,60 m<sup>2</sup>

Collection: Leather

Material: Leder | Leather

Color variations: 9

Usage:



Mark:

Flame retardant

Fire protection:  
CAL TB 117-2013  
EN 1021 1 & 2

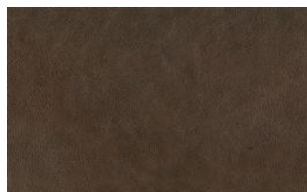
Available colours:



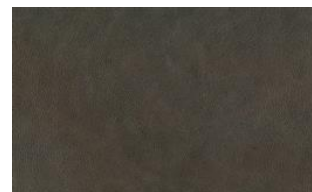
Patina 030



Patina 040



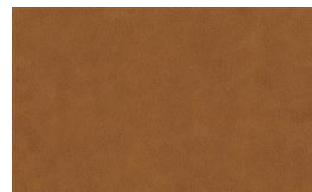
Patina 041



Patina 042



Patina 050



Patina 060

Special notes:

Piece dyed - check for colour match before processing  
recyclable

Clean with a damp cloth or recommended care product.

No hump hole and burn mark visible

minimum order quantity 1 hide

---

The illustrations are not color-coded.

*fine*



Patina 070



Patina 072