



PATINA 050

An authentic Aniline leather with a vintage look, hardly treated, with a natural, open grain structure, soft, warm and full to the touch. | Thickness: 1,3 - 1,5 mm | hide size: 3,60 m²

Collection: Leather

Material: Leder | Leather

Color variations: 9

Usage:



Mark:

Flame retardant

Fire protection:
CAL TB 117-2013
EN 1021 1 & 2

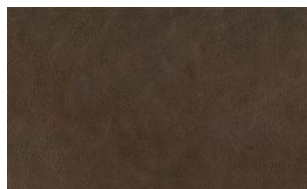
Available colours:



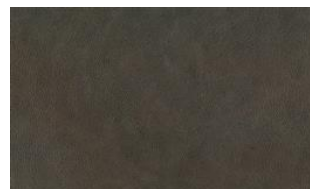
Patina 030



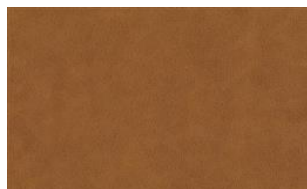
Patina 040



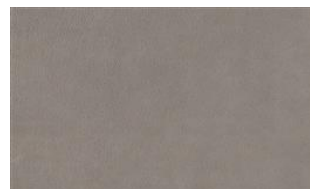
Patina 041



Patina 042



Patina 060



Patina 070

Special notes:

Piece dyed - check for colour match before processing
recyclable

Clean with a damp cloth or recommended care product.

No hump hole and burn mark visible

minimum order quantity 1 hide

The illustrations are not color-coded.

fine



Patina 071



Patina 072