



## MOOVE 010\*

Decorative soft loden weave with embroidered pleating

Available colours:

Collection:	Cool & Cosy
Material:	FR 78 % WO / 17 % PA / 5 % PES
Color variations:	2
Total width:	135.00 cm
Rapport width:	14,5 cm
Rapport height:	15,0 cm

Usage:

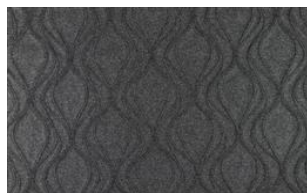


Mark:  
Flame retardant

Care instructions:



Fire protection:  
EN 1021 1 & 2  
BS 5852



Moove 070\*

\* limited availability - please contact our [sales team](#)

The illustrations are not color-coded.