



LILY o11

In - Outdoor upholstery fabric, woven in a two-coloured diamond pattern with a raised texture and a woolly feel

Collection:	Sunday In- & Outdoor
Material:	100 % PP
Color variations:	7
Total width:	142.00 cm
Usable width:	140.00 cm
Rapport width:	1,5 cm
Rapport height:	2,2 cm

Usage:



Mark:
Washable
Stain protection
Outdoor

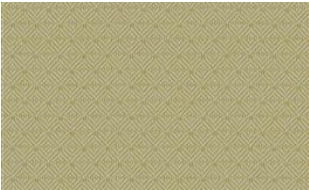
Care instructions:



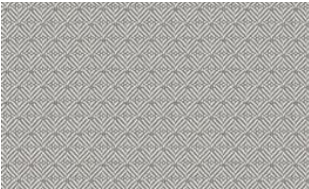
Available colours:



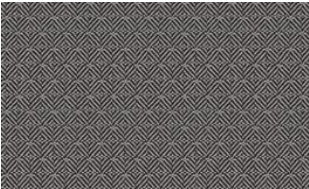
Lily o10



Lily o30



Lily o70



Lily o71



Lily o87



Lily o88

Special notes:

water repellent

Oekotex 100 certified

mildew resistant

UV resistant

high lightfastness

odour resistant

anti-bacterial | microbial

*Fibre Guard Outdoor

anti-microbial

The illustrations are not color-coded.