



LILY 010

In - Outdoor upholstery fabric, woven in a two-coloured diamond pattern with a raised texture and a woolly feel

Collection:	Sunday In- & Outdoor
Material:	100 % PP
Color variations:	7
Total width:	142.00 cm
Usable width:	140.00 cm
Rapport width:	1,5 cm
Rapport height:	2,2 cm

Usage:



Mark:

Washable

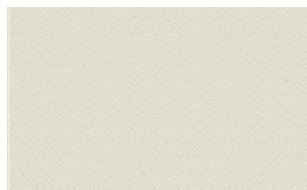
Stain protection

Outdoor

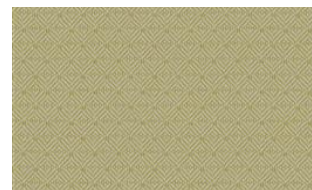
Care instructions:



Available colours:



Lily 011



Lily 030



Lily 070



Lily 071



Lily 087



Lily 088

Special notes:

water repellent

Oekotex 100 certified

mildew resistant

UV resistant

high lightfastness

odour resistant

anti-bacterial | microbial

*Fibre Guard Outdoor

anti-microbial

The illustrations are not color-coded.