



LAOLA o6o

Decorative fabric made of Trevira with curved lines made of effect yarn

Collection:	Poesie
Material:	FR 100 % PES Trevira CS
Color variations:	6
Total width:	135.00 cm
Rapport width:	28,0 cm
Rapport height:	38,0 cm

Usage:



Mark:

Washable
Trevira CS

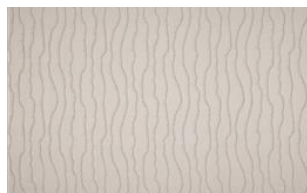
Care instructions:



Fire protection:

EN 13773
DIN 4102-1

Available colours:



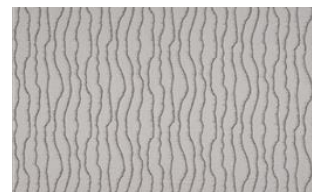
Laola o10



Laola o20



Laola o30



Laola o70



Laola o80

Special notes:
Oekotex 100 certified

The illustrations are not color-coded.