

## FINA 011

Decorative fabric, woven in a slightly transparent plain weave from a fine yarn with a high linen content and small knots, partly with a melange effect

|                   |                    |
|-------------------|--------------------|
| Collection:       | Verticals          |
| Material:         | 53 % LI   47 % PES |
| Color variations: | 28                 |
| Total width:      | 310.00 cm          |

Usage:



Mark:

Washable  
Room-high

Care instructions:



Available colours:



Fina 010



Fina 012



Fina 013



Fina 014



Fina 015



Fina 016

Special notes:

Knot formation - part of the desired effect

With zinc band

Room-high

\*Shrinkage approx. +- 2-3 %

Oekotex 100 certified

\*wash separately

---

The illustrations are not color-coded.



*fine*



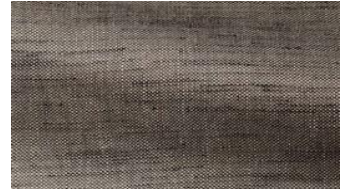
Fina 020



Fina 021



Fina 040



Fina 041



Fina 042



Fina 043



Fina 050



Fina 051



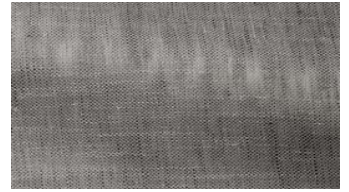
Fina 052



Fina 060



Fina 061



Fina 070



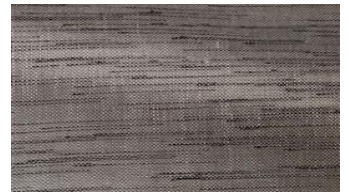
Fina 071



Fina 072



Fina 073



Fina 080



Fina 081



Fina 082



Fina 083



Fina 084



Fina 085