



## BEATLE o89

Upholstery fabric, woven from a chenille yarn with a three-dimensional honeycomb look

|                   |                             |
|-------------------|-----------------------------|
| Collection:       | Imagine                     |
| Material:         | 52 % CV   38 % CO   10 % LI |
| Color variations: | 4                           |
| Total width:      | 135.00 cm                   |
| Rapport width:    | 8,5 cm                      |
| Rapport height:   | 7,5 cm                      |

Usage:



Care instructions:



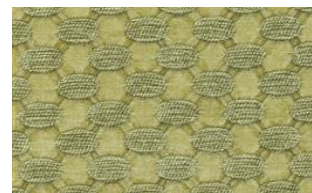
Special notes:

piece dyed - check for colour match before processing

Available colours:



Beatle o10



Beatle o30



Beatle o40

The illustrations are not color-coded.